

Some Specimens of *Microebria* (Coleoptera, Psephenidae) Preserved in the Naturhistorisches Museum Basel, with Description of a New Species from India¹⁾

Chi-Feng LEE

Museum of Biological Diversity, The Ohio State University,
1315 Kinnear Road, OH 43212, U.S.A.

and

Ping-Shih YANG

Department of Plant Pathology & Entomology,
National Taiwan University, Taipei, Taiwan, R.O.C.

Abstract Six specimens of *Microebria* from India deposited in the Naturhistorisches Museum Basel were examined. Three known species, *M. semistriata*, *M. minima* and *M. reticulata* are recorded, and one new species, *M. wittmeri* is described.

Introduction

Microebria is a genus of minute insects composed of six species, and widespread in Southeast Asia (LEE & YANG, 1994; LEE & JÄCH, 1996). However, their small size resulted in neglect by most collectors. There are only a few specimens deposited in museums and the type series of each species is no greater than three specimens. We examined six specimens deposited in the Naturhistorisches Museum Basel, and as the result, we have recognized 4 species. Three of them belong to *M. semistriata*, *M. minima* and *M. reticulata*, and the remaining one is a new species to be described in the present paper. All the specimens were collected in India, which seems to indicate that the species diversity of *Microebria* is rather high in that part of the world.

We thank Dr. M. BRANCUCCI for the loan of these specimens. T. K. PHILIPS is thanked for reading the manuscript. K. C. WONG is thanked for the line drawings.

1) This study was financially supported by the National Science Council, R.O.C., project no. NSC 87-2313-B002-054.

***Microebria semistriata* (CHAMPION)**

Eubria semistriata CHAMPION, 1921, 204.

Microebria semistriata: LEE & JÄCH, 1996, 45.

Materials examined. 2 males, "Lopchu, 1500m, 315 / Darjeeling Distr., Wittmer, 1975"; 1 male, "Chanfi 8.5, 1300/1400m / India U.P., 1978, W. Wittmer".

Distribution. India.

***Microebria minima* (CHAMPION)**

(Fig. 1)

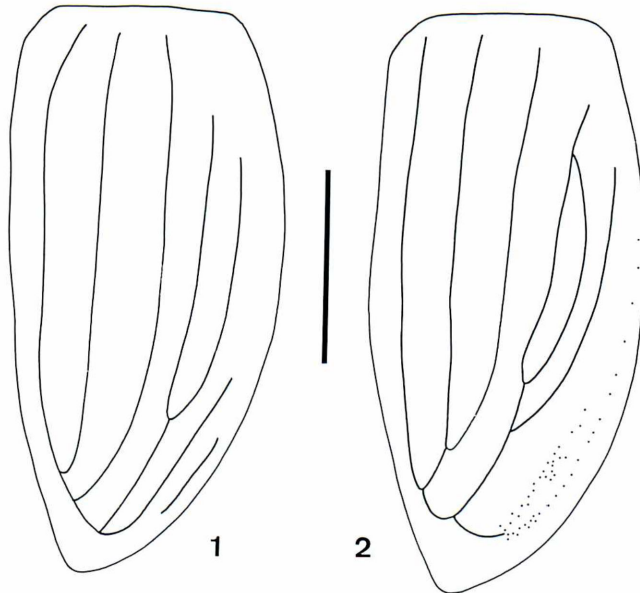
Eubria minima CHAMPION, 1924, 250.

Microebria minima: LEE & JÄCH, 1996, 45.

Material examined. 1 male, "Karponang, 2700m, 8–11.XI.1984 / E. Sikkim, C. J. Rai".

Variability. Unlike the type specimens with five striae on each elytron, this specimen from eastern Sikkim has seven striae (Fig. 1). Stria 6 arises at the apical 1/3, apically conjoining with striae 4+5. Stria 7 is very short and situated on the apical 1/4.

Distribution. India.



Figs. 1–2. Right elytron. — 1, *Microebria minima* (CHAMPION); 2, *M. wittmeri* sp. nov. Scale bar=0.5 mm.

***Microebria reticulata* LEE et JÄCH**

Microebria reticulata LEE et JÄCH, 1996, 49.

Material examined. 1 male, "Lagyap, 2500m, 2.VII.1984/India, Sikkim, Ch. J. Rai".

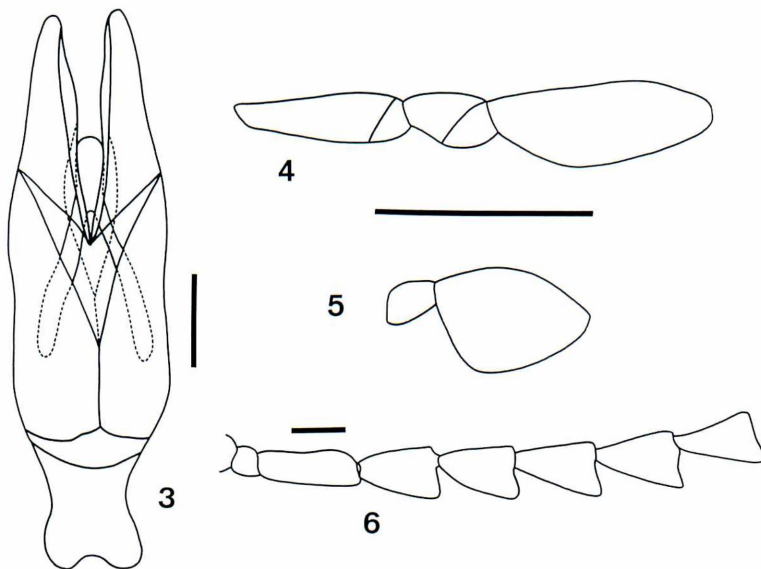
Distribution. Nepal, India (new record).

***Microebria wittmeri* sp. nov.**

(Figs. 2–6)

Male. 1.8 mm long, 1.2 mm wide. Coloration dark brown. Antennae short (Fig. 6), segment 3 the longest and oblong, serrate from segments 4 to 8. Maxillary palpus (Fig. 4) slender, terminal segment laterally dilated; relative lengths of segments 2–4 about 1.8 : 1 : 2.6. Labial palpus (Fig. 5) small, about 0.46 times as long as maxillary palpus; relative lengths of segments 2–3 about 1 : 3.1; terminal segment strongly and laterally dilated. Elytral striae (Fig. 2) similar to those in *M. reticulata*, but apical mesh reduced, stria 6 apically convergent with striae 4+5, and then apically convergent with striae 1+2+3; stria 7 discontinuous. WP/LP=2.0. LE/WE=1.1. WP/WE=0.7.

Male genitalia (Fig. 3):— Aedeagus 600 μ m long, 3.4 \times as long as wide. Penis very short, about 0.4 \times length of aedeagus; apex narrowly rounded; baso-lateral apophyses long, about 0.7 \times length of penis. Parameres about 0.3 \times length of tegmen, ventro-mesal margins very weakly convex. Tegmen gradually widened toward basal



Figs. 3–6. *Microebria wittmeri* sp. nov. — 3, Aedeagus, dorsal; 4, maxillary palpus; 5, labial palpus; 6, male antenna. Scale bar=0.1 mm.

1/3, then narrowed at middle, gradually widened toward apical 1/3, then strongly narrowed from apical 1/3 to 1/4, and gradually widened toward base.

Type material. Holotype, male, “Labong, 1979, 1800/1900 m, 11.5/Distr. Darjeeling, India”.

Diagnosis. This species is closely related to *M. reticulata*, but differs from it by the reduced elytral meshes, the shorter apical process of penis, the weakly convex ventro-mesal margins of parameres, and the medially narrowed aedeagus.

Etymology. Dedicated to the eminent coleopterologist, Dr. W. WITTMER.

Distribution. Known only from the type locality.

要 約

李 奇峰・楊 平世：バーゼル自然史博物館に所蔵されている1新種記載を含むインドの *Microebria* 属（ヒラタドロムシ科）。——バーゼル自然史博物館に所蔵されている、インド産 *Microebria* 属に含まれる標本6個体を検することができた。同定結果は以下の4種であるが、うち1種はインドから新記録で、他の1種は新種としてここに記載した。

M. semistriata (CHAMPION, 1921), *M. minima* (CHAMPION, 1924), *M. reticulata* LEE et JÄCH, 1996 (新記録), *M. wittmeri* sp. nov.

References

- CHAMPION, G. C., 1921. Some Indian Coleoptera (6). *Entom. mon. Mag.*, **57**: 201–206.
 ——— 1924. Ditto (13). *Ann. Mag. nat. Hist.*, (9), **13**: 249–264.
 LEE, C.-F., & M. A. JÄCH, 1996. Review of the genera *Eubria* LATREILLE and *Microebria* LEE and YANG (Coleoptera: Psephenidae: Eubriinae). *Coleopt. Bull.*, **50**: 39–51.
 ——— & P.-S. YANG, 1994. *Microebria*, a new genus of Oriental Eubriinae (Coleoptera, Psephenidae). *Ibid.*, **48**: 325–329.